

Completeness as the lodestar



www.industrialdoors.se

INDUSTRIAL DOORS





What do you prefer?

- A door that is cheap to buy or a door that is cheap to own?

We start by asking this question, as doors are usually characterised as a product that can have high after sales costs. The difference between choosing the right or wrong type of door can be a question of thousands of pounds per door and year.

These are costs for energy, repairs and spare parts and also include environmental costs through unnecessary road transport due to service requirements and the door's short life span.

Doors are like cars. The car with the lowest price tag might not be the cheapest to own.

However, high after sales costs can be avoided by making the right choice.

TORVERK Industrial Doors AB has the expertise and the resources to assess your needs, and based on these we will calculate the type of door that offers you the best economic option. And for the environment. Now and in the future.

Complete range

We have a complete range of doors. This means we are not governed by our own range and thereby *not* forced to suggest a *specific* type of door. We can help you to choose the solution that meets your requirements.

Irrespective of whether you will own the door yourself or whether you are solely answering for the construction work, we have just the model for you. Both with regard to functionality and price. Naturally we prefer to sell the best quality, which is more economic in the long term, but we can also provide budget priced doors if your project is sensitive to price.

At a glance

This brochure gives just a glance of our products and the procedures we use to arrive at the Right Door.

Contact us and we will help you in your choice. It is important that the choice of door is made as early as possible in the building process and that those who will use - and in the end will pay to use to the door - have their say.

We use the Swedish Academy of Engineering Sciences' and the Transport Research Commission's calculation model for "Utilization cost calculation for doors" to analyse a need correctly and then choose the right technical solution.

This, and a complete range, means that we can meet requirements in a more neutral and "scientific" manner.



Q-DOOR - The market's best guarantee!

Best all round

The folding door is the perfect all round door. This is due to its simplicity, small space demands and its ease of use in the upright position. But above all, due to the possibilities in adapting the design of the folding door in size, number of sections, window configuration, and appearance, etc.

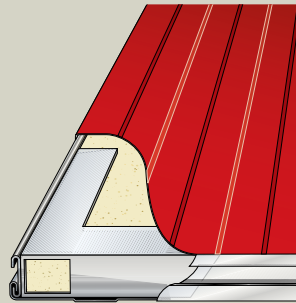
Europe's most energy efficient standard door!

However, most important is Q-DOOR's good utilization cost characteristics. Compared to every other type of door it is cheaper to own, uses less energy, has lower service and spare parts costs and is subject to less collision damage due to its movement pattern.

Q-DOOR FX is probably the most user friendly, cheapest to own and environmentally improved door because of its long life and the extremely low service and spare part requirement. The fact that Q-DOOR FX has the market's best warranty is a natural consequence of this.

10 year Warranty

Q-DOOR FX's design and dimensioning result in the industry's best warranty. See page 11.

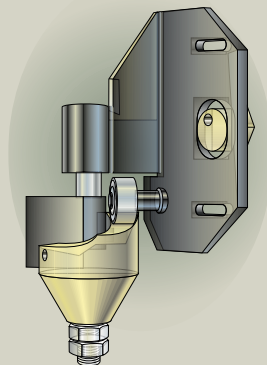


Door leaf

With a 0.7 mm sheet steel skin, Q-DOOR's steel skin is 15-35 % thicker than other types of doors. Integrated, heavy-duty steel reinforcement and 52 Kg density/m³ freon-free polyurethane foam makes Q-DOOR's door leaf the most sturdy and resilient in its class. Wind load dimensioning 0.7-2.0 kPa (compared to normal 0.5 kPa).

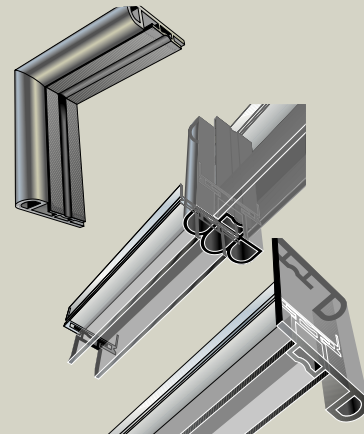
Safety

TORVERK and Q-DOOR are pioneers when it comes to safety. We were first with a pinch guard in 1963 and now, at the turn of the millennium, we are first again with an entire door leaf as a pinch guard. With the Q-BASE operator (which fits all doors) "the door knows" what to do and takes evasive action irrespective of where and what is blocking the door movement. Q-DOOR FX meets higher safety demands than EN-standards.



Energy values

U_p-value for Q-DOOR FX is as low as 0.22 W/m²C. Nearly double that of other types of doors. Count the entire door area, incl. clearance and rubber seals and the difference is even greater. However, the door's energy value is more than just its U_p-value.



It is just as important that the door is equipped with a sealing system that withstands ageing. Q-DOOR's T-value (tightness) is the best in tests. Less than 1.0 m³/m²/h. From an energy point of view, it is more important that the door closes effectively. With an adapted operating speed and the Q-BASE operator with passage controlled closing many tens of thousand kilowatt hours can be saved per door and year.

Life span

All fittings and lock options are designed in materials and dimensions that mean the need of service has virtually been eliminated and the product's life span exceeds most options. A life span of 30-40-50 years is normal for a Q-DOOR.

Q-DOOR

 **torverk**
INDUSTRIAL DOORS



Economy and the environment go hand in hand!

Economy & Environment

Door experts know there are three aspects that have the greatest impact on the environment:

1. Energy losses during usage
2. Road transport due to servicing
3. Short product life span

You can decide yourself! Whether the door will require a little or a lot of service, a lot or little energy during its short or long life span. Frequently

it is a question of whether you wish to buy a cheap door or whether you wish to have a door that is cheap to own?

Study the figure below and you will soon realise that economy and the environment go hand in hand when it concerns doors.

Our task here in the world is to make doors that are cheap to own and at the same time contribute towards a better environment!

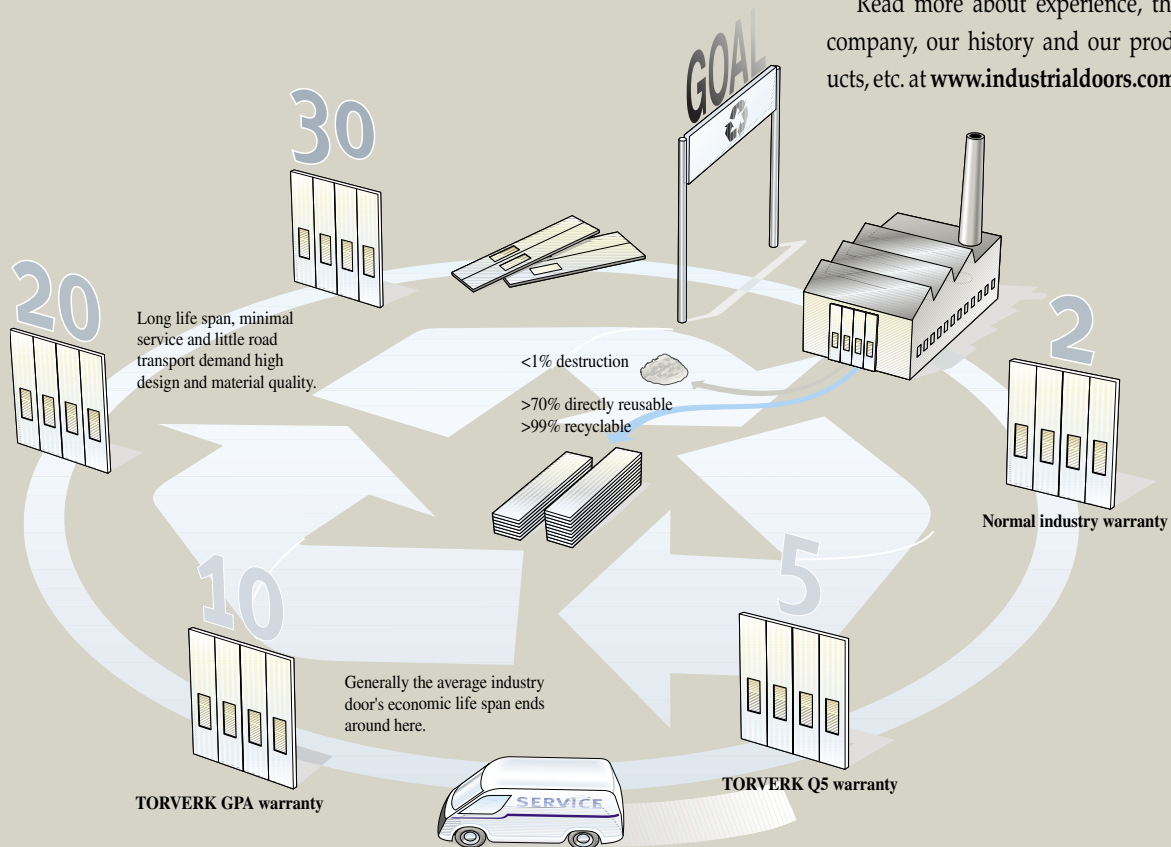
Good for you and the environment!

Experience

Torverk's history started in 1949, some 50 years ago. Since 1962 TORVERK has run its own door production in Torsby in northern Värmland.

It's said that "Experience replaces nothing". Yet when it concerns doors, we have learnt that "neither does nothing replace experience".

Read more about experience, the company, our history and our products, etc. at www.industrialdoors.com.



TORVERK's goal is to give the product a long economic life span, to minimise waste and to use raw materials optimally as well as minimise service and road transport.



Factory and main office in Torsby.

RANGE - All types

- ❑ Sandwich designed bifolding doors

- Q-DOOR®
- E-DOOR®
- QDoorLight®
- D-DOOR®

- ❑ Frame based Folding door
- ❑ Side sliding door - Q-DOOR SX®
- ❑ Overhead door Q-DOOR VB®
- ❑ Roller shutter OH-DOOR®
- ❑ Overhead - Compact Door®
- ❑ Rapid door:
 - folding - Q-DOOR RAF
 - sliding - Q-DOOR RAS
 - roller - N-DOOR



OH-DOOR AG

Overhead door with plastic glazed door panels in natural anodised aluminium sections. Motor driven sizes from 2.5 m wide up to 9 x 9 m. With or without motor drive. Manual doors from 1 to 35m².



Windows

Large selection of windows and window formats. Genuine insulation glass in horizontal travel doors. Double acrylic in upward travel doors. See more about windows in respective door brochures.



OH-DOOR AP

Sectional door with sandwich panels. Windows with round or straight corners.

- ❑ Side hung doors
- ❑ Special doors
- ❑ GATES
 - T-Gate® bifolding gate
 - Sliding gates in aluminium
 - Side hung gates in aluminium
- ❑ Q-DOC®
 - Cargo sheds, Loading bays & Weather seals
- ❑ Door operators
- ❑ Motor operation
- ❑ Q-Panel



Frame based Folding door

Robust and hard wearing door for tough environments. Suitable for special sizes and when large glazed areas are required. Less appropriate for outer walls as the U-value is high.



Q-DOOR FX, see page 6. Appearance from the outside as E-DOOR and QdoorLight FX. Colour and window options available with infinite variation.

RANGE - For impartial customer support

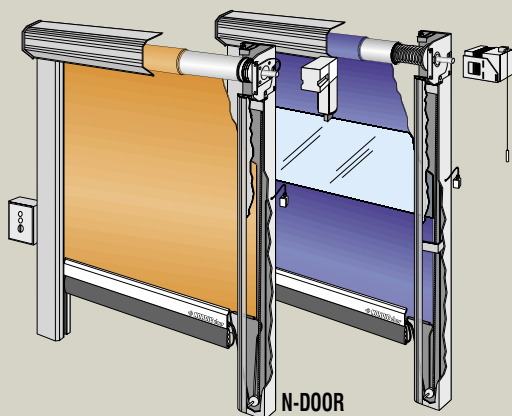


Q-DOOR RAS

(RA= Rapid, S = Sliding). Rapid 1m/s, automatic lateral travel sliding door (above).

N-DOOR

Very fast, automatic roller door with variable travel speed up to 3m/s. Sizes 0.6 x 0.6 to 6.0 x 6.0 metres.



Q-DOOR VB

Vertical travel sectional door. The balanced spring system is replaced by a "once-only adjusted" counter-balance, which demands very little service and is very hard wearing and long lived.

Q-DOOR SX

Lateral travel sliding doors (to the left). Designed as small rapid running or large hanger doors.



T-DOOR

Sectional door. Compact upward travel door with function and appearance as a roller shutter door, but the door sections fold (without taking up space inside the premises) together into packet just above the door opening. Also available in rapid action model.

Q-DOOR RAF

(RA= Rapid, F = Folding) Rapid bifolding door (to the right). Design as Q-DOOR FX, but with rapid motor. Opening time 7.5 sec. Sizes up to 13m². Smaller sizes can be run more rapidly. Standard Q-DOOR FX is available with operating times as low as 8 seconds depending on the size.



Q-DOC®

Cargo sheds, loading bays, weather-proof, doors and door operators.



GATES

T-GATE Portal-Gate (above) available for outdoor or indoor installation. Also available in aluminium side-hung or sliding gate designs. With or without electrical operation.

More information

about the doors listed here and others is available in separate brochures. Call: +46 560 68 98 00.



THE TRUE LIGHT OF DAY - Our strength!

Up until the installation everything has been promises and colourful dreams. But it is in the true light of day you really have to show your hand.

Design ideas, sales promises, time schedules, promised deliveries and installation times, etc. Promises that shall become reality. It is here we really dare to show our pride!

No one is perfect, however, it can be a goal. We started to introduce our quality system in 1992, and were certified according to ISO 9000 in 1995.

Since this errors have been reduced by 90% so that with the final inspection they are down to 0%. Zero errors during the final inspection mean time and cost savings for our customers, but also for us. Our quality promise:

"We keep what we promise by doing it right the first time".

Of course, it's not all down to our fitters. Our organisation is trimmed so that a thorough job is done at the requirements analysis phase and this is carried on through to design, planning, manufacture, delivery and installation planning. Our fitters put the icing on the cake!



GOOD DOOR ECONOMY - Your future?

What are Utilization costs?

A door in a building incurs costs over and above its purchasing price for a company. The utilization cost comprises all the costs that directly or indirectly affect the choice of door.

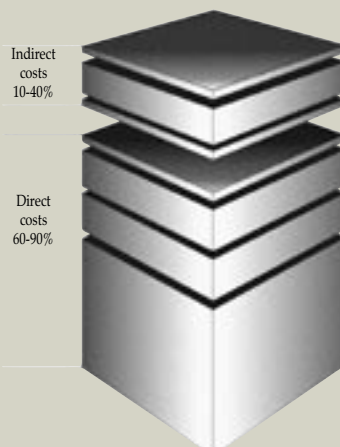
These costs are..

Direct costs:

- Capital costs
- Passage costs
- Heat loss costs

Indirect costs:

- Operating costs
- Maintenance costs
- Travelling expenses with service
- Service costs
- Repair costs
- Spare parts costs
- Inspection costs
- Surface costs
- Downtime costs



The utilization cost column

above illustrates the costs for a normal door. The direct costs, (the lower block) are easy to calculate with a large degree of certainty. To assess the indirect costs (upper block) requires experience and door expertise.

To make the Right choice

The foundations of good door economy are laid before you choose the door. Normally you choose the type of door and then hunt down the best price. A method that can turn out to be extremely expensive in the long term; even for the environment!

The difference between the right and wrong choice can be a question of thousands of pounds per door and year in utilization costs, with high traffic doors it can be a question of tens of thousands per year.

- Per door!

Let us, based on your needs, help analyse which factors give good door economy in just your circumstances.

WARRANTY - Free insurance!

When the door has been delivered and installed, reality arrives! A good warranty is also a measure of the products quality. Make sure of your future door costs!

Excerpt from TORVERK's Warranty system. Valid for sweden.

Years	Type	Brief description
2	AB	"Standard warranty" in Sweden for overhead, frame and sandwich door and for weather seals and loading bays.
3	G3	With service agreement G3 the warranty is extended to 3 years for all types of TORVERK's doors
5	Q5	With a basic service agreement of 1-2 services per year the 2 year warranty is extended to 5 years incl. spare parts and all travel and labour costs: Applies to Q-DOOR, loading bays and weather seals.
10	GPA	Warranty-plus-agreement (GPA): Applies to Q-DOOR FX. 10 year warranty incl. servicing at a fixed price incl. all travel and labour costs and spare parts.
13	GPPA	As GPA, but up until the 14 th year.



We make doors that are cheap. To own.



Factory and Main office:
TORVERK Industrial Doors AB
Box 184, SE-685 24 TORSBY, SWEDEN
Tel. +46 (0)560 - 68 98 00
Fax. + 46 (0)560 - 122 65
E-mail: info@torverk.se

Subject to change without prior notification, due to continuous product development.